



Sveriges lantbruksuniversitet  
Swedish University of Agricultural Sciences

**The Faculty of Natural Resources and  
Agricultural Sciences**

# **Bacteria in Biofuel Production**

*Afsar Ali*

Department of Microbiology

Master's thesis • 30 hec • Second cycle, A2E

Biotechnology, Master Programme • Examensarbete/Sveriges lantbruksuniversitet,

Institutionen för mikrobiologi: 2012:12 • ISSN 1101-8151

Uppsala 2012



# Bacteria in Biofuel Production

*Afsar Ali*

**Supervisors:** Ievgeniia Tiukova, Swedish University of Agricultural Sciences,  
Department of Microbiology

Yumiko Sakuragi, Copenhagen University,  
Department of Plant Biology and Biotechnology

**Examiner:** Volkmar Passoth, Swedish University of Agricultural Sciences,  
Department of Microbiology

**Credits:** 30 hec

**Level:** Second cycle, A2E

**Course title:** Independent Project in Biology - Master's thesis

**Course code:** EX0565

**Programme/education:** Biotechnology, Master Programme

**Place of publication:** Uppsala

**Year of publication:** 2012

**Title of series:** Examensarbete/Sveriges lantbruksuniversitet, Institutionen för mikrobiologi:

**no:** 2012:12

**ISSN:** 1101-8151

**Online publication:** <http://stud.epsilon.slu.se>

**Key Words:** Rubisco, Cyanobacteria, RBC operon, pDF-Trc plasmid, infusion cloning, Carbon fixation, *Lactobacillus vini*, *Saccharomyces cerevisiae*, *Dekkera bruxellensis*, ethanol production, Transformation, coculture, ethanol tolerance

**Sveriges lantbruksuniversitet**  
**Swedish University of Agricultural Sciences**

The Faculty of Natural Resources and Agricultural Sciences  
Uppsala BioCenter  
Department of Microbiology



## Abstract

In this work, bacteria are regarded either as production organisms or as interacting organisms with another production organism, namely yeast. The aim of using bacteria as a production organism was, to optimize Rubisco activity by introducing additional gene cassettes of Rubisco in Cyanobacteria. At first, RBC operon was tried to clone in pDF-Trc plasmid, using infusion cloning, but did not obtain *E. coli* transformants containing the RBC operon, when *E. coli* was transformed with infusion cloning reaction. This might be because of the plasmid concentration that was used, which was less than the recommended concentration. When cloning the RBC operon by conventional restriction/ligation, *E. coli* transformants containing the operon were obtained. Further characterisation of the cloned operon could not be performed during this project. In the second part of the project, the ethanol tolerant lactic acid bacterium *Lactobacillus vini* was investigated, with a special focus on its interaction with ethanol producing organisms, *Saccharomyces cerevisiae* and *Dekkera bruxellensis*. Lower ethanol concentrations did not have any considerable effect on the growth of *L. vini*. However, at higher ethanol concentration, a continuous decrease in cell numbers of *L. vini* was observed. The study shows, that *L. vini* can tolerate and survive higher ethanol concentrations, as compared to other microorganisms. *L. vini* had better growth rate, when it was co-cultured separately with *Saccharomyces cerevisiae* and *Dekkera bruxellensis* compared to, when it was co-cultured with both the yeasts. Ethanol production in batch was relatively higher when *L. vini* was co-cultured with *S. cerevisiae* compared to co-cultivation with *D. bruxellensis* and with both yeasts, which is most probably due to the rapid growth of *S. cerevisiae* compared to *D. bruxellensis*.



## Contents

1. Introduction	7
1.1.1. Bacteria as Production organism	7
1.1.2. Development of Biofuel resources	8
1.1.3. Biofuels from photosynthetic microorganisms	8
1.1.4. Biology of Cyanobacteria	9
1.1.5. Rubisco	9
1.2. Bacteria as an interacting organism	10
1.2.1. Biofuels: Ethanol production	10
1.2.2. Yeasts for ethanol production	11
1.2.3. Lactic acid bacteria	11
1.2.4. Ethanol production habitat	12
2. Materials and methods	13
2.1. Materials (as prod. Organism)	13
2.2. Methods (as prod. Organism)	13
2.2.1. Verification of plasmid	13
2.2.2. Infusion primer designing	14
2.2.3. Transformation	14
2.2.4. Liquid culture	14
2.2.5. Miniprep	14
2.2.6. Amplification Rubisco operon	15
2.2.7. Gel purification of PCR product	15
2.2.8. Restriction digestion to linearize plasmid	15
2.2.9. Infusion cloning	15
2.2.10. Conventional cloning	15
2.2.11. PCR amplification of RBC operon	16
2.2.12. Restriction digestion of plasmid DNA	16
2.2.13. Purification of PCR product and digested plasmid	16
2.2.14. Heat inactivation of restriction enzymes	16
2.2.15. Ligation	16
2.2.16. Transformation	17
2.2.17. Colony PCR	17
2.3. Materials (as an interacting Organism)	17
2.3.1. Strains	17
2.3.2. Media	17
2.3.3. Culture conditions	18
2.4. Methods (as an interacting Organism)	18
2.4.1. Pre-culture	18
2.4.2. Response of <i>L.vini</i>	18
2.4.3. Co-culture	18
2.4.4. Analytical methods	18
3. Results	19
3.1. Bacteria as production organism	19
3.1.1. Plasmid verification	19
3.1.2. Linearization of plasmid	19
3.1.3. Purified plasmid	20
3.1.4. PCR amplification of RBC operon	21

3.1.5. Purified RBC operon	21
3.1.6. Amplified RBC operon using restriction sites integrated primers	22
3.1.7. Linearized plasmid and purified RBC operon	23
3.1.8. Gel purified RBC operon and linearized vector	24
3.1.9. Colony PCR	25
3.2. Results (Bacteria as an interacting organism)	26
3.2.1. Effect of ethanol on growth of <i>L. vini</i>	26
3.2.2. Co-culture of <i>L. vini</i> with <i>S. cerevisiae</i> and <i>D. bruxellensis</i>	28
3.2.2.1. Co-culture of <i>L.vini</i> with <i>S.cerevisiae</i>	28
3.2.2.2. Co-culture of <i>L.vini</i> with <i>D. bruxellensis</i>	29
3.2.2.3. Co-culture of <i>L. vini</i> with <i>S. cerevisiae</i> and <i>D. bruxellensis</i>	30
4. Discussion	30
4.1. Bacteria as production organism	30
4.1.1 Work need to be done	31
4.2. Bacteria as an interacting organism	31
4.2.1. Effect of ethanol on <i>L. vini</i> growth	31
4.2.2. Co-culture of <i>L. vini</i> with <i>S.cerevisiae</i> and <i>D. bruxellensis</i>	31
5. Acknowledgements	32
6. References	32



## 1. Introduction

International Energy Agency (IEA) estimates that eighty five percent of global fossil fuel reservoirs are used for combustion purpose only. Every day, European Union imports oil worth approx 1 billion euro to cover a part of this consumption. The US Energy Information Administration (EIA) estimates that the global energy usage is increasing approximately at a rate of 1 GW per day. In order to meet this growing energy demand with nuclear technology alone, we need to build one new power plant every day. Therefore the development of renewable fuel production is very important on a global and local scale. Mature and large scale technologies already exist for renewable electricity but the biggest challenge is to sustainably produce fuels (1).

Dependence on conventional fossil fuels as the only significant source of transportation energy can create risk- of economy deterioration, disruption of fuel supplies and of engagement of force and military to safeguard access to oil. Biomass converted into transportation fuel is an alternative to conventional fossil fuel. These renewable fuels are known as biofuels. Increasing the production of biofuels and using them for transportation can significantly reduce the dependency on oil. Creating a significant biofuel supply would guarantee a secure and prosperous future; and will also play a significant role in reducing global warming by generating fewer pollutants that are the cause of acid rain and smog (2).

In this work, bacteria are regarded as either production organisms or as interacting organisms with another production organism, namely yeast. As a production organism, the aim was to genetically manipulate Cyanobacteria to enhance their capability to fix CO<sub>2</sub> through optimizing Rubisco activity. The aim of using bacteria as an interacting organism was to study the effect of *L. vini* on ethanol production, the impact of cultivation condition and increasing ethanol concentration on its growth and also to study the impact of yeast on the growth of *L. vini* in a co-culture.

### 1.1. Bacteria as Production organism (Genetic manipulation of Cyanobacteria)

CO<sub>2</sub> emission from fossil fuel combustion also poses great threat to global sustainability. Different technologies that are currently available for CO<sub>2</sub> removal include injection into deep sea and geological formation, physicochemical absorbents and enhanced biological fixation. Adsorbent materials such as LiOH are non-renewable and require a large storage space. Other abiotic procedures are based on injection of CO<sub>2</sub> directly into deep oceans, old coal mines, geological strata, saline aquifers or oil wells and mineral carbonation of CO<sub>2</sub>. These methods present great challenges because of potential CO<sub>2</sub> leakage and high space requirements. Hence, biological carbon fixation is the only technology which is both economically feasible and environmentally sustainable in long term. Carbon fixation does not provide complete removal of CO<sub>2</sub> but instead relies on a cycle whereby carbon is taken up during photosynthesis and no additional CO<sub>2</sub> is created, to go along sustained energy production and nutrient utilization (3).

### **1.1.1. Development of Biofuels resources**

In recent time, there has been a rapid growth worldwide in using liquid fuels in the transport sector, driven by policies that are focused to achieve energy security and diminishing green house gas emissions. First generation biofuels have been mostly produced from oil and food crops including rapeseed oil, sugar beet, sugarcane, maize, animal fats and vegetable oil using conventional technology. It is projected that production and consumption of biofuels will keep growing but their role towards meeting the energy requirements in transport sector will remain limited because of competition with the production of food and fibre for arable land, high requirements of water and fertilizers, lacking of well managed agricultural practices and a requirement for conservation of bio diversity (4). There have been controversies associated with the use of first generation biofuels, mainly because of their impact on world food market and food security, which has raised significant questions on their potential as a substitute to the fossil fuels and their sustained production (5). The commencement of second generation biofuels aims to produce fuels from the whole plant material of dedicated energy crops or forest harvesting residues, agricultural residues or wood processing waste rather than from food crops (5). However the technology for converting these crops into Biofuel has not been developed to the scale for commercial exploitation (7).

An economically and technically feasible Biofuel resource should cost the same or less than petroleum fuels, use a minimum land area, improve atmospheric air (carbon fixation) and also should require less water (7). Therefore with advancing technology and current knowledge, third generation biofuel specifically extracted from microorganisms are considered to be technically feasible and can be used as an alternative source of energy bypassing major issues associated with the previous generations biofuel (4).

### **1.1.2. Biofuels from photosynthetic microorganisms**

Some of the potential advantages associated with the use of biofuels derived from photosynthetic microorganisms are: they are capable of production all year round; therefore, their cultures exceed the yield of the best oilseed crops in yield (8). They grow in liquid media but require less water than terrestrial crops and therefore can reduce the burden on fresh water sources (9). They can be cultivated on non-arable land and in brackish water and may not acquire land use change and thus minimize environmental impacts (10) without compromising food production, fodder and other crop derived products (11). Biomass production of photosynthetic organisms can also effect biofixation of waste CO<sub>2</sub> when it comes to maintenance and improvement in air quality (11).

Certain challenges have impeded the photosynthetic organisms' biofuel technology development to be commercially feasible and allow its sustainable production and utilization. They include, for instance the selection of species which must balance the need for biofuels production and the extraction of other important co-products (12), continued development of technology in order to attain improved photosynthetic efficiencies (13), development of technology for evaporation reduction, single species cultivation and CO<sub>2</sub> diffusion losses (14).

### 1.1.3. Biology of Cyanobacteria

Cyanobacteria also called blue green bacteria, are gram negative photosynthetic prokaryotes and are one of the most ancient organisms existing on earth; they are apparently the first organism capable of oxygenic photosynthesis, utilizing water as electron source to generate reductant in photosynthesis. The associated release of oxygen was one of the most important events in the history of planet. It has gradually changed the early reducing atmosphere into an oxidizing one, enabling the development of aerobic mode of life in the world. Oxygenic photosynthesis, evolved in Cyanobacteria and apparently inherited by green plants is the most important process for capturing the light energy from sun on earth (15). The chemical energy and reductant produced in the light reactions are used for CO<sub>2</sub> fixation. Photosynthesis is main factor in the cyclic transformation of oxygen and carbon and maintaining very important gaseous composition of the atmosphere (15).

Basically, a Cyanobacterium's cellular organization is characterized by the presence of massive intracellular membranes, thylakoids, which constitute the photosynthetic apparatus and hold the photosynthetic pigments. Cytoplasm contains different kinds of granular inclusions with diverse functions and compositions cytoplasm. The planktonic form of Cyanobacteria contains gas vacuoles in their cells, which provide buoyancy to the cells and enable Cyanobacteria to occupy a certain position within the water body (15).

The conversion of photosynthetic energy in Cyanobacteria involves the action of two different photosystems, Photosystem I and II. These two systems are linked in a series and interact through an electron carrier chain. Phycobiliproteins (allophycocyanin, phycocyanin and phycoerythrin) which are the main light harvesting pigments and contribute to the colour of Cyanobacteria are organized as complexes called phycobilisomes and are attached to the thylakoid's membranes in regular arrays. Excitation energy is transferred through phycobiliproteins to chlorophyll *a* in the reaction centers (15).

The assimilation of CO<sub>2</sub> (photoautotrophy) in light is the main important mode of metabolism in cyanobacteria. The primary path by which carbon is assimilated is the Calvin cycle involving the two most important enzymes phosphoribulokinase and Rubisco (ribulose-1, 5-bisphosphate carboxylase/oxygenase) (15).

### 1.1.4. Rubisco

Rubisco is one of the most abundant proteins in nature; this enzyme catalyzes the first step of the Calvin cycle that converts atmospheric CO<sub>2</sub> into organic compounds such as glucose in photosynthesis. Rubisco is considered particularly inefficient because of its ability to catalyze both the carboxylation and oxygenation of RuBP. The carboxylation of RuBP produces two phosphoglycerate molecules that enter Calvin cycle, finally to form starch and sucrose and to regenerate RuBP. The oxygenation of ribulose-1, 5-bisphosphate produces one molecule each of phosphoglycerate and phosphoglycolate (16). The reaction of Rubisco with oxygen competes with the carboxylation reaction in which carbon dioxide is fixed and supports a pathway called photorespiration. Photorespiration results in a loss of up to 25% of carbon fixed by carboxylation reaction. The loss is expected to increase in future, because of

increase in temperature due to global warming, which likely favours oxygenation over carboxylation. The catalytic rate of Rubisco is very low as it only fixes three to ten carbon dioxide molecules per second per enzyme molecule. Many attempts were made to improve the efficiency of Rubisco by genetic manipulation but they failed. One problem is that cyanobacterial and plants' Rubisco is a large oligomer which consists of eight large (RbcL,  $\sim$  50k Da) catalytic subunits bound to eight small (RbcS,  $\sim$  15k Da) structural subunits. When isolated, the large subunits form insoluble and non functional aggregates with one another. That is why Rubisco is never been successfully reconstituted into an active enzyme in vitro from its unfolded subunits (17). The chaperone RbcX, has recently been shown to promote the assembly of RbcL subunits from a number of cyanobacterial species. It is a  $\sim$ 15k Da protein and it acts as an arc shape homodimer that binds the carboxyl end sequence (EIKFEFD) of RbcL in a central hydrophobic cleft (18).

Cyanobacteria are responsible for nearly 70% of CO<sub>2</sub> assimilation in the aquatic environment. The aim of the project was to optimize the activity of Rubisco by introducing additional gene cassettes of Rubisco in Cyanobacteria in order to increase its capacity to fix CO<sub>2</sub>, and to increase the yield of the final product i.e. carbohydrate. It has been previously shown that Rubisco activity was increased upto 45% by introducing an additional cassette of RbcL and RbcS genes into an engineered cyanobacterium *Synechococcus elongatus* (19). We intended to increase the Rubisco activity even more by introducing an additional cassette of RbcX gene along with the RbcL and RbcS in cyanobacterium.

## **1.2. Bacteria as an interacting organism (LAB in ethanol production interacting with yeast)**

### **1.2.1. Biofuels: Ethanol production**

During the 1970s, world fuel crises triggered awareness amongst many countries of their susceptibility to oil interdiction and shortage. Much attention was concentrated on alternative fuel sources with a special emphasis on ethanol. In recent time, the economics of ethanol production became more feasible and it can now compete with standard diesel. One important factor that makes ethanol more attractive as a fuel is that it is a renewable resource (20). The Environmental Protection Agency (EPA) in United States has made it mandatory to use oxygenated fuel in certain areas in order to meet standards of air quality for carbon monoxide (21).

Biomass conversion to biofuels has been the area of very intense research since 1970s. Due to concerns about global energy security, climate change and petroleum supply, this work has gained significant scientific and political momentum. In the next two decades, global energy usage is projected to nearly two-fold and biofuel production might serve as a carbon-neutral and sustainable energy source (22).

In US, almost all of the fuel ethanol is produced by fermenting corn starch and in Brazil by sugar cane sucrose. Technology for the production of ethanol from non-food sources has been developed now so that large scale production of ethanol from such sources would be a reality in few years (23).

A number of reviews and reports show the capability of microorganisms to produce ethanol by fermentation, and several microorganisms, such as yeasts, bacteria, and fungi have been reported to be used for ethanol production (23).

The production of industrially important compounds, using microbial systems has increased substantially during the last decade due to the genomic revolution. Further research and advances in the fields of gene regulations, synthetic biology, protein engineering, metabolic engineering and pathway portability will drive the development of cost efficient systems for the production of biofuels (22).

### **1.2.2. Yeast for ethanol production**

Yeasts have been the most commonly used microorganisms throughout history for the production of ethanol. *S. cerevisiae* can produce ethanol to a concentration of 18% of the fermentation broth and it is the preferred microorganisms for most ethyl alcohol fermentation. It can be grown on simple sugars and also on disaccharide sucrose. It is recognized as safe and is used as food additives in human food and is therefore also suitable for producing bread and alcoholic beverages. It uses Embden-Doudoroff (ED) pathway to metabolize glucose (23).

Yeasts, which can accumulate ethanol even in the presence of oxygen for instance, *Schizosaccharomyces pombe* and *Saccharomyces cerevisiae* are known as Crabtree-positive yeasts whereas others known as Crabtree-negative yeasts degrade sugar to carbon dioxide under aerobic conditions (24). This Crabtree effect in *Saccharomyces* provides the background for the `make-accumulate-consume` strategy (25). This helps *Saccharomyces* in competing with other microorganisms in natural habitat (26).

*Dekkera bruxellensis*, which separated from *Saccharomyces* lineage more than 200 mya ago is also a Crabtree positive and facultative anaerobe (26), it is often isolated in wineries and is known as wine spoilage yeast (27). It has been shown in an ethanol plant with yeast cells recirculation that *D. bruxellensis* is a production organism (28) producing ethanol, aldehydes and other by-products (29). It out competed the original inoculant *S. cerevisiae* strain without affecting the productivity or ethanol yield. Likewise, its presence has also been reported in bioethanol industrial processes in Brazil, which run continuously with cell recycling similar to the Swedish ethanol plant (30).

### **1.2.3. Lactic acid bacteria (*Lactobacillus vini*)**

Lactic acid bacteria (LAB) are frequently used in different fermentation processes at industrial scale. They are gram-positive cocci, acid tolerant, have a low GC content, and are non-respiring. LAB are associated by their common physiological and metabolic characteristics. They can be found in lactic acid containing products and in decomposing plants, producing lactic acid as the major metabolic product of carbohydrate fermentation. Their special characteristic to show high tolerance to low pH range makes them different from other species of bacteria (31).

LABs follow two fermentation patterns i.e. homo fermentation and hetero fermentation. When glucose is in excess with limited availability of oxygen,

homo fermentative LABs convert one molecule of glucose to yield two pyruvate molecules using the Embden Meyerhof pathway (EMP). Hetero fermentative LABs using pentose phosphate pathway, dehydrogenate one molecule of glucose-6-phosphate to 6-phosphogluconate and subsequently decarboxylate it to one molecule of carbon dioxide while reducing Pentose-5-phosphate to one molecule of glyceraldehydes phosphate (GAP) and one acetyl phosphate molecule. Glyceraldehyde phosphate is further cleaved into lactate and acetyl phosphate is reduced to ethanol, producing acetyl-CoA and acetaldehyde as intermediates (32).

Scientists presumed that *Lactobacillus* possesses the properties to affect the industrial ethanol fermentation processes positively (33). It has been observed that the pH of the fermentation process decreases by the addition of lactic acid bacteria to the fermenter containing single yeast species. Some of the *Lactobacillus* species are adapted to the nutritional and alcoholic conditions of the ethanol fermentation process. It can create the problem of yeast flocculation during alcoholic fermentation. The lactic acid produced by *lactobacilli* inhibits yeast metabolism and decreases ethanol yield (34).

*Lactobacillus vini* are gram positive, motile and non-spore-forming rod shaped bacteria. They are found as single cells, in pairs and as short chains (35). They are physiologically versatile, having the ability to ferment pentoses and hexoses to lactic acid, having facultative anaerobic homofermentative metabolism and can grow between 25°C and 45°C (36). *Dekkera bruxellensis* and *Lactobacillus vini* may act as potential stable consortium for the industrial production of bioethanol (28).

#### **1.2.4. Ethanol production habitat**

Normally when the ethanol concentration in fermenter increases, most of the microorganisms experience impairment of membrane and the response to ethanol stress is related to the type of cellular membrane's lipids (37). It has been shown that pH has no significant effect on ethanol fermentation while substrate concentration and temperature have significant effect on alcohol fermentation and the fermentation ability greatly reduced at higher temperatures (38). In addition some metabolites such as acetic acid, acetaldehyde, and medium chain fatty acids may also have negative effects on *S. cerevisiae*, which is the principal yeast in alcohol fermentation (39). Ethanol fermentation process provides an ecosystem where there is a potential for yeast to create yeast-yeast and yeast-bacteria interactions. The different kinds of interactions between microorganisms are commensalism, neutralism, synergism, antagonism, parasitism or predation and competition. In ethanol fermentation, yeast can influence the growth of other yeast or bacteria by a number of mechanisms. Early growth of yeast can reduce the nutrients making it less favourable for other microorganisms to grow and can also produce a number of metabolites that maybe toxic to other species. The production of carbon dioxide can eliminate or reduce oxygen and in this way can limit the growth of aerobic species. Some species may produce inhibitory proteins, enzymes or peptides that can destroy other species by breaking down their cell wall. However there are also numerous mechanisms that can positively affect the growth of other microorganisms for instance; the yeast produces biomass and dies during fermentation releasing vitamins and amino acids that may be useful for the growth of other species later in the process (40).

It has been observed in an ethanol producing plant that *D. bruxellensis* is not a contaminant in the ethanol fermentation but it is instead the production organism and it does not impair the production process. It has also been observed that *L. vini* forms a stable consortium with *D. bruxellensis* and it may be function to stabilize the population and production of ethanol in the fermenter (28).

In this work we are studying the impact of cultivation conditions on the growth of *L.vini*. YPD medium with different ethanol concentrations were used to study the impact of ethanol on the growth of *L.vini*. Furthermore, *L.vini* was co-cultured with yeasts *S. cerevisiae* and *D. bruxellensis* to study, to study the specific interaction of the bacteria with both the yeasts, the impact of these two yeasts on the growth of *L.vini* and on the overall ethanol production.

## 2. Material and methods (Bacteria as production and interacting organism)

### 2.1. Materials

**Strains:** cyanobacterium *Synechocystis* strain PCC 6803, *Escherichia coli* TOPO 10 competent cells (Invitrogen), pDF-Trc plasmid vector, spectomycin, 1.5% LB agar plates: 1.0% Tryptone (Invitrogen), 0.5% yeast extracts (Invitrogen), 1.5% agar (Invitrogen), 1.0% NaCl.

#### Primers:

*Table 1:* Primers, used in this experiment.

Primer	Sequence
Infusion forward	5`-GGAAACAGACCATGGTACAAGCCAAAGCA-3`
Infusion reverse	5`-AGGTCGACTCTAGAGTTAGTAACGGCCTTGG-3`
Forward Primer with <i>EcoR1</i> restriction site	5`-GGGGGGGAATTCATGGTACAAGCCAAAGCA-3`
Reverse Primer with <i>Pst1</i> restriction site	5`-GGTTCCGGCAATGATTCTGCAGGGGGGGG-3`

Primers used as negative controls 537 F and 1177 R.

*Table 1:* shows the primers and their sequences, used in this experiment.

### 2.2. Methods

#### 2.2.1. Verification of plasmid pDF-Trc with restriction enzymes

Reaction mixture was prepared using 1 µl of 1242.13 ng/µl of plasmid DNA, 2 µl each of 20 units/micro litre restriction enzyme *BsrG1* and *Sac1*

(Invitrogen), 3  $\mu$ l of 10X NEB Buffer 4, 3  $\mu$ l of 10X BSA and the total volume was made 30  $\mu$ l with 19  $\mu$ l of distilled water. The reaction was incubated for five hours at 37°C.

### **2.2.2. Infusion primer designing using CLC workshop**

A forward primer was designed such that its 5' end contains an 11 base pair sequence just upstream of the restriction site *EcoR1* of the vector and 3' end contains an 18 base pair sequence of the Rbc operon including start codon. Similarly the reverse primer was also designed the same way except that the 5' end contains a 15 base pair sequence just downstream of the restriction site *BamH1* of the vector and its 3' end contains 16 bases complementary to the Rbc operon including the stop codon. All primers were purchased from Integrated DNA Technologies (IDT), Leuven, Belgium.

### **2.2.3. Transformation**

pDF-Trc is a low copy number plasmid. To get a stock of plasmid, *E. coli* TOPO 10 competent cells were transformed with it following chemical transformation protocol: 2  $\mu$ l plasmid was added to the competent *E. coli* cells and the cells were put on ice for 30 minutes and then heat shocked at 42°C for 30 seconds. The cells were again put on ice immediately and 250  $\mu$ l of LB medium was added to it and finally the cells were shaken for one hour at 250 rpm and 37 °C. 150  $\mu$ l of the transformation solution was plated onto LB agar plates containing 30  $\mu$ g/ml antibiotics (spectomycin) and were incubated overnight at 37 °C (41).

### **2.2.4. Liquid culture**

5 ml of LB medium in a culture tube containing 30  $\mu$ g/ml of spectomycin was inoculated with *E. coli* colonies from the antibiotics plates and was incubated overnight at 37 °C with shaking at 250 rpm.

### **2.2.5. Miniprep (based on Qiagen Miniprep procedure) using isopropanol**

4 ml of cell culture from the overnight culture was spun down at maximum speed in a table top centrifuge and was resuspended in 300  $\mu$ l P1 solution (Qiagen) with added RNase plus lysozyme (10 mg/ml). Then 300  $\mu$ l of each P2 and P3 was added and mixed by inverting the tubes each time. The tubes were then spun down for 30 minutes at maximum speed in a table top centrifuge and 800  $\mu$ l of supernatant was transferred to new tubes. 600  $\mu$ l of isopropanol was added to it, mixed by inverting and the mixture was spun down for 15 minutes at maximum speed in a table top centrifuge. The supernatant was poured off, 1 ml of 70% ethanol was added and tubes were spun down for 5 minutes at maximum speed in a table top centrifuge. The supernatant was poured off and the tubes were spun down for additional two minutes to remove the residual supernatant. The pellet was left to air dry for 10 minutes. Finally the pellet was resuspended in 30  $\mu$ l elution buffer (Qiagen).



### **2.2.6. Amplifying Rubisco operon**

The Rubisco operon was PCR-amplified to be used in infusion cloning. PCR was prepared as: 5 µl of 5 µM forward infusion primer, 5 µl of 5 µM reverse infusion primer, 5 µl of 10 µM dNTP, 10 µl of X5 buffer, the reaction was made for 5 reactions each with different template volume i.e. 1 µl, 2 µl, 3 µl and 4 µl and one positive control with different forward and reverse primers other than infusion ones, 0.5 µl of phusion polymerase (Clontech) and total volume was set up to 50 µl with 23.5 µl of distilled water. The PCR was programmed as 95 °C for 2 minutes, 30 cycles of 95 °C for 30 sec, 56 °C for 30 sec and 7 °C for three minutes. The final extension was performed at 72 °C for 10 minutes.

### **2.2.7. Gel purification of PCR product**

PCR product was gel purified using Qiagen Gel purification kit following the procedure described in the manual provided with the kit. To confirm the size of the fragment, 5 µl of the DNA solution was analysed by gel electrophoresis.

### **2.2.8. Restriction digestion to Linearize Plasmid**

The plasmid DNA was linearized using restriction enzymes *Bam*H1 and *Eco*R1 (Invitrogen) to be used for infusion cloning. Digestion reaction was set for plasmid miniprep with isopropanol. The reaction was set as: 5 µl of plasmid, 1 µl of *Bam*H1 (20 units/micro litre), 1 µl of *Eco*R1 (20 units/micro liter), 3 µl of NEB2 buffer, 3 µl of BSA (10X) and the final volume was set to 30 µl with distilled water and the reactions were incubated at 37 °C for 5 hours. The products were analysed by gel electrophoresis to confirm that the plasmid was linearized.

### **2.2.9. Infusion cloning**

Purified PCR insert and linearized vector were mixed together in a 2:1 molar ratio and the infusion cloning reaction was set up as: 5X In-Fusion reaction buffer 2 µl, In-Fusion enzyme 1 µl, vector (50 ng/ µl) 3 µl, PCR insert (36 ng/ µl) 4 µl. Also a negative reaction was set as: 5 X In-Fusion reaction buffers 2 µl, In-Fusion enzyme 1 µl, vector (50 ng/ µl) 3 µl and the total volume was adjusted to 10 µl with 4 µl distilled water and the reactions were mixed. They were first incubated at 37 °C for 15 minutes, followed by incubation at 50 °C for 15 minutes and then were placed on ice. The reaction volumes were bring to 50 µl with TE buffer and mixed well. 2.5 µl of this 50 µl solution was taken to later on transform *E. coli* and then 50 µl of TE buffer was added to the remaining 47.5 µl solution and the total volumes were adjusted to 97.5 µl, also 2.5 µl of this solution was taken to transform *E. coli*.

### **2.2.10. Conventional cloning**

For conventional cloning new primers were designed such that *Eco*R1 and *Pst*I restriction sites were introduced in the forward and reverse primers respectively with GGGGGG overhang in both primers. The forward primer was designed such that it had a short gene specific sequence of 16 bp including start codon, whereas, the reverse primer had a stretch of 16 bp gene specific reverse

complement sequence. Liquid culture was performed the same way as before, inoculating LB medium containing (30 µg/ml) spectomycin with pDF-Trc and was incubated overnight at 37 °C, with shaking at 250 rpm. The Miniprep was performed with the overnight liquid with Qiagen kit using isopropanol and the DNA was resuspended in 50 µl TE + RNase (20 µg/ml).

#### **2.2.11. PCR amplification of RBC operon**

RBC operon was amplified by PCR using the new primers. A PCR was made for 4 reactions and was run as described earlier.

#### **2.2.12. Restriction digestion of Plasmid DNA**

Plasmid DNA was digested with restriction enzymes *EcoR1* and *Pst1*. The digestion reaction was set as:

10 µl of plasmid DNA

1 µl of each 20 units/micro litre restriction enzymes *EcoR1* and *Pst1*(Invitrogen)

3 µl of NEB3

3 µl of (10X) BSA

The final volume was adjusted to 30 µl with 12 µl of distilled water; the reaction was kept at 37 °C for 5 hours. The plasmid DNA was extracted using QIAquick gel extraction kit, following the protocol provided with the kit and gel resolved.

#### **2.2.13. Purification of PCR product and digested plasmid DNA**

Amplified PCR product and digested plasmid DNA was purified to remove impurities and background using QIAquick PCR purification kit and following protocol, described in the manual provided with the kit.

#### **2.2.14. Heat inactivation of restriction enzymes**

To inactivate restriction enzymes the sample was incubated at 80 °C for 20 minutes to avoid further degradation of the plasmid DNA.

#### **2.2.15. Ligation**

Two ligation reactions were set up; one using heat inactivated digested plasmid DNA and another without heat inactivated digested plasmid DNA. With PCR purified digested PCR product, also a negative reaction was set for each ligation reaction. Ligation reaction was set as, 6 µl of PCR product, 1 µl each of heat inactivated and without heat inactivated plasmid, 1 µl (10X) T4 DNA ligase buffer, 1 µl T4 DNA ligase and the total volume was adjusted to 10 µl with 1 µl of distilled water, the negative reaction was the same except that it did not have the PCR product and the volume was adjusted to 10 µl with 7 µl of

distilled water. The ligation mixtures were incubated at room temperature for two hours (42).

### 2.2.16. Transformation

TOP 10 competent cells (chemical) were transformed with the ligation reaction solutions as: 2.5 µl of 10 µl total ligation solutions were added to competent cells. The cells were kept on ice for 30 min and were then heat shocked for 30 sec at 42 °C, after heat shock the cells were immediately transferred on to ice for a few minutes and 250 µl of LB medium was added to each tube. The cells were then kept on shaker for one hour at 37 °C and 300 rpm. 290 µl of each reaction was spread on spectomycin plates and were incubated overnight at 37 °C (41).

### 2.2.17. Colony PCR

There were sixteen colonies on the plate, all the colonies were transferred to a tube and 10 µl of water was added to it and they were heated for 1 min, this water inoculated with single colony was used as template in colony PCR. PCR was performed for each of the 16 colonies separately. PCR was made and run as described earlier.

## 2.3. Material

**2.3.1. Strains** Yeast strains of *D. bruxellensis*, *S. cerevisiae* and the bacterial strain of *L. vini* were used.

**2.3.2. Media** Yeast-Peptone-Dextrose (YPD), MRS liquid media, MRS agar media and Mineral Medium (MM).

- i. YPD liquid media: YPD liquid medium was prepared by weighing 20 g Peptone (OXOIDE); 20 g Glucose (OXOIDE) and 10 g yeast extract (OXOIDE). The final volume was adjusted to one liter with distilled water and was autoclaved.
- ii. YPD agar media: YPD agar media was prepared by weighing 20 g Peptone (OXOIDE); 20 g Glucose (OXOIDE); 10 g Yeast extract (OXOIDE) and 10 g agar. The final volume was adjusted to one liter with distilled water and was autoclaved.
- iii. MRS liquid medium: 52 grams of MRS broth (OXOIDE) was weighted and added to distilled water and the volume was adjusted to one liter and autoclaved.
- iv. Mineral Medium (MM): Mineral medium was prepared by weighing 10 g of Yeast extracts (OXOIDE), 10 g of Glucose (OXOIDE) and 10 g of salt and the final volume was adjusted to 1 liter with distilled water and autoclaved.
- v. MM + 20 g/l Peptone (OXIODE).
- vi. MM with all twenty amino acids in concentration 100 mg/l.
- vii. MM with all amino acids except cystein in concentration 100 mg/l of each.
- viii. MM with cystein in concentration of 100 mg/l.
- ix. YPD ethanol medium: YPD with different ethanol concentrations, i.e. 10 g/l, 50 g/l and 100 g/l.

### 2.3.3. Culture conditions

Culture samples with *D. bruxellensis* and *S. cerevisiae* were kept in vials under limited aeration at 30 °C and culture samples with *L. vini* cells were kept under anaerobic conditions at 30 °C.

## 2.4. Methods

### 2.4.1. Pre-culture

**Yeast:** *S. cerevisiae* and *D. bruxellensis* were inoculated in YPD liquid medium and incubated for three days at 30 °C with continuous shaking.

**Lactobacillus vini (*L. vini*):** *L. vini* was inoculated in MRS liquid medium and incubated at 30 °C with continuous shaking for three days.

### 2.4.2. Response of *L. vini*

Triplet cultures of *L. vini* were carried out in a batch culture by inoculating vials containing 100 ml YPD medium having three different ethanol concentrations, i.e. 10 g/l, 50 g/l and 100 g/l. pH was adjusted at 5 with a pH meter and the culture was inoculated with 1 ml of pre-culture having initial OD 1. Samples were taken at different time intervals i.e. 0 h, 24 h, 48 h, 72 h and 96 h for viability count using dilutions of  $10^{-4}$ ,  $10^{-5}$ , and  $10^{-6}$  and for HPLC analysis.

### 2.4.3. Co-culture

Triplet co-cultures were carried out by inoculating vials containing 200 ml of MRS medium. The first three vials contained all the three microorganisms i.e. *L. vini*, *D. bruxellensis* and *S. cerevisiae*. The second triplet contained *L. vini* and *D. bruxellensis* and the third triplet had *L. vini* and *S. cerevisiae*. The cultures were inoculated with 1 ml of pre-cultures having initial O.D 1 and pH 5. Samples were taken at different time intervals i.e. 0 h, 12 h, 24 h, 36 h, 48 h, 72 h, 96 h and 120 h for viability count using dilutions of  $10^{-4}$  and HPLC analysis.

### 2.4.4. Analytical methods

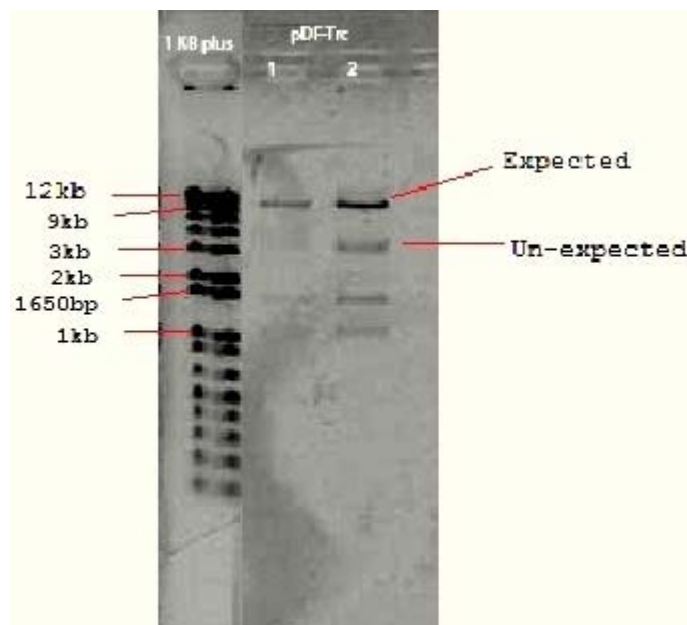
OD, viability count, HPLC analysis for sugar, acid and ethanol determination were performed by the staff at the department of microbiology, SLU.

### 3. Results

#### 3.1. Bacteria as Production organism

##### 3.1.1. Plasmid verification

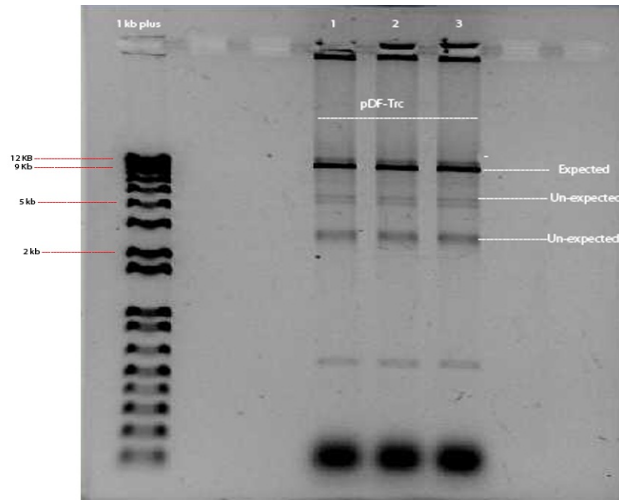
Plasmid pDF-Trc was digested with restriction enzymes *BsrG1* and *Sac1*. The fragments were separated on 1.5% agarose gel. pDF-Trc is a 9227 bp plasmid and the size of the fragment, which is approximately 9000 bp (*Figure 1*) indicates that it is pDF-Trc. There are some additional fragments of approximately 5,000 bp, 1,650 bp and 1,000 bp in lengths, which is because pDF-Trc is a supercoiled plasmid. The verified plasmid was then Miniprep and linearized for downstream process.



*Figure 1:* Verification of pDF-Trc plasmid with restriction digestion. The gel was loaded with 1 kb plus ladder in the 1<sup>st</sup> place and plasmid pDF-Trc in wells designated as 1 and 2.

##### 3.1.2. Linearization of plasmid

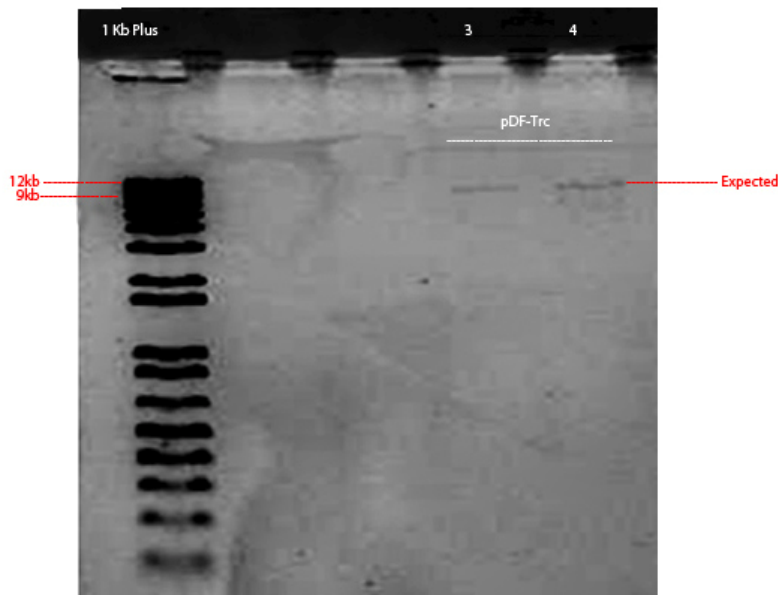
Plasmid pDF-Trc was linearized using restriction enzymes *BamH1* and *EcoR1*. The plasmid was linearized, so that it can be used as a vector in infusion cloning. The fragments were separated on 1.5 % agarose gel. There is a fragment of approximately 9 kb in length which is equal to the size of pDF-Trc 9227 bp, this fragment was extracted from the gel and was purified (*Figure 2*). There were some impurities and unexpected fragments of different lengths and reason might be supercoiled nature of the plasmid.



*Figure 2:* Linearization of pDF-Trc plasmid. The gel was loaded with 1 kb plus ladder in the 1<sup>st</sup> well and plasmid pDF-Trc in the wells designated as 1, 2 and 3. The desired fragment corresponds to the 9 kb mark on the ladder. The fragments correspond to the 5 kb mark 2.5 kb are not the desired fragments.

### 3.1.3. Purified plasmid

*Figure 3* shows the pDF-Trc plasmid after the plasmid was purified from the gel. The size of the fragments correspond to 9 kb mark on the ladder indicating that is the desired pDF-Trc plasmid, as the size of this plasmid is 9227 bp. Later, this purified plasmid was used for infusion cloning.



*Figure 3:* Gel purified plasmid. The gel was loaded with 1 kb plus ladder in the 1<sup>st</sup> well and gel purified plasmid in the wells named as 3 and 4. The size of the fragment corresponds to the 9kb mark on the ladder.

### 3.1.4. PCR amplification of RBC operon

Figure 4 shows a PCR amplified RBC operon using in-fusion primers. For PCR amplification, different volumes of the template DNA was used i.e. 1, 2, 3 and 4  $\mu$ l. The result shows the presence of different length fragments, RBC operon is 2427 bp in size and the length of one fragment corresponds to this size. There are some unexpected length fragments of the size approximately 1300 bp and less for some unknown reason.

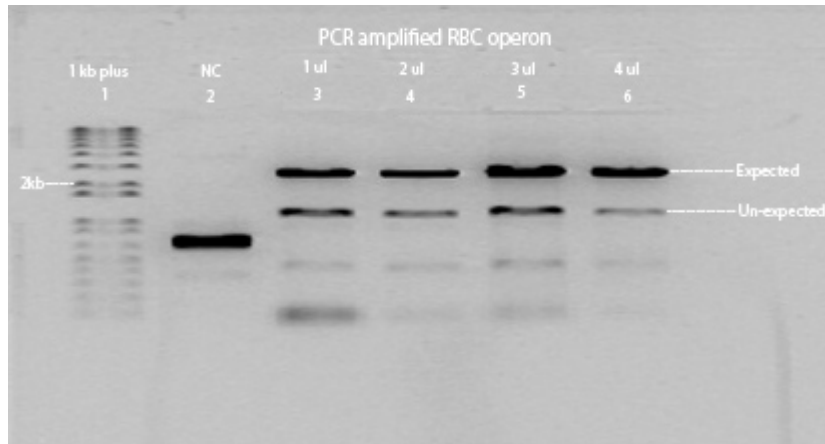
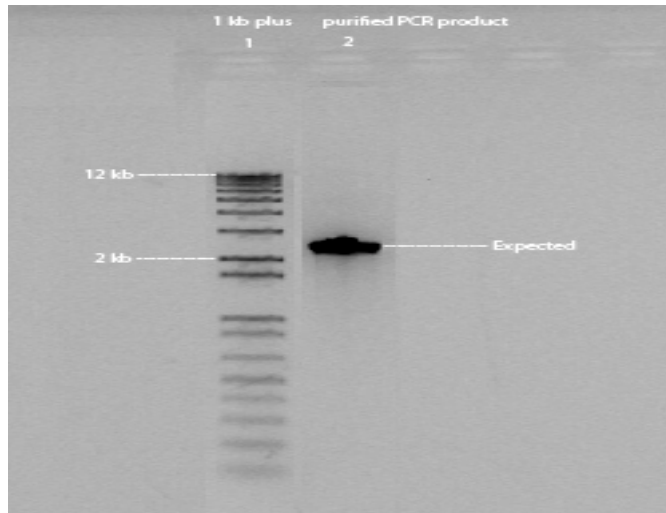


Figure 4: PCR amplified RBC operon. The gel was loaded with 1 kb plus ladder in the 1<sup>st</sup> well, negative control in the 2<sup>nd</sup> well. The PCR products with different volumes of template DNA i.e. 1  $\mu$ l, 2  $\mu$ l, 3  $\mu$ l and 4  $\mu$ l were loaded in the 3<sup>rd</sup>, 4<sup>th</sup>, 5<sup>th</sup> and 6<sup>th</sup> well respectively. The fragment that corresponds above 2 kb and slightly below 3 kb mark on the ladder is the expected length fragment. The fragment that corresponds slightly above 1 kb mark and the other light colour fragments less than 1 kb in lengths is the unexpected fragments.

### 3.1.5. Purified RBC operon

Figure 5 shows the gel purified PCR product. RBC operon is 2427 bp in size; the result shows that the purified PCR product is the RBC operon. The fragment corresponds to the area between the 2 kb and 3 kb mark on the ladder and shows that it is the expected length fragment.

Note: this purified RBC operon and purified pDF-Trc vector (Figure 3) were used to transform TOP 10 competent cells, using in fusion cloning method, the transformed cells were spread on antibiotic plates and were incubated overnight at 37°C. Next day, colonies appeared on the antibiotic plates. In order to increase cell density, colonies from these plates were used to inoculate the LB medium in culture tubes and were incubated overnight at 37 °C with continuous shaking at 250 rpm, but no growth was observed in the culture tubes next day. The experiment was repeated but again it was not successful, so we decide to use the conventional cloning method i.e. ligation and transformation, using new primers with integrated restriction sites.

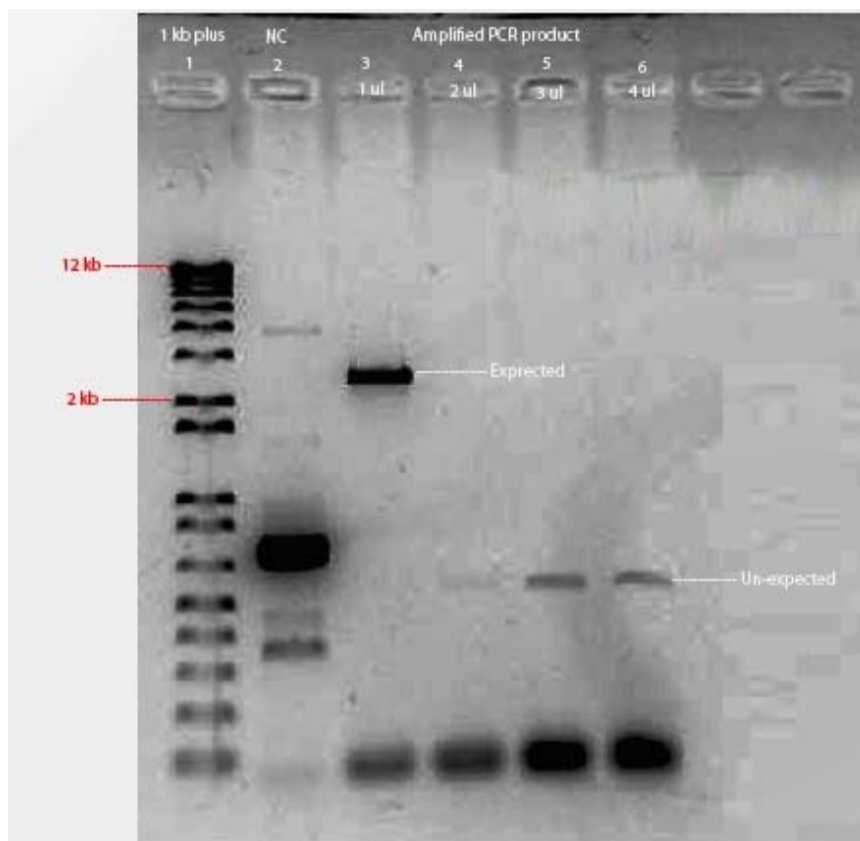


*Figure 5:* Gel extracted and purified RBC operon. The gel was loaded with 1 kb plus ladder in 1<sup>st</sup> well and purified PCR product in the 2<sup>nd</sup> well. The fragment that is approximately 2400 bp in length is the expected fragment.

### **3.1.6. Amplified RBC operon using restriction sites integrated primers**

*Figure 6* shows a PCR amplified RBC operon using restriction sites integrated primers. The fragments were separated on 1.5% agarose gel. The PCR product was amplified using four sets of reaction each with different volumes of the template DNA i.e. 1  $\mu$ l, 2  $\mu$ l, 3  $\mu$ l and 4  $\mu$ l. The result shows that the length of the fragment amplified with 1  $\mu$ l of template DNA corresponds to the size of the RBC operon, while we did not get the expected length fragments with the rest of the amplified products.





*Figure 6:* PCR amplified RBC operon, using restriction sites integrated primers. The gel was loaded with 1 kb plus ladder in 1<sup>st</sup> well, a negative control (NC) in 2<sup>nd</sup> well. PCR products amplified using different volumes of template DNA i.e. 1 µl, 2 µl, 3 µl and 4 µl were loaded in the 3<sup>rd</sup>, 4<sup>th</sup>, 5<sup>th</sup> and 6<sup>th</sup> well respectively. The length of the fragment obtained with PCR product in 3<sup>rd</sup> well is the expected one and did not get the expected result with the rest of the PCR products.

### 3.1.7. Linearized plasmid and purified RBC operon

Linearized pDF-Trc plasmid and purified RBC operon were separated by gel electrophoresis (*Figure 7*). The plasmid was linearized using *EcoR1* and *Pst1* restriction enzymes. The result shows, that although the expected length fragments of plasmid DNA and RBC operon were obtained but still there is some background and impurities and the products need to be further purified.

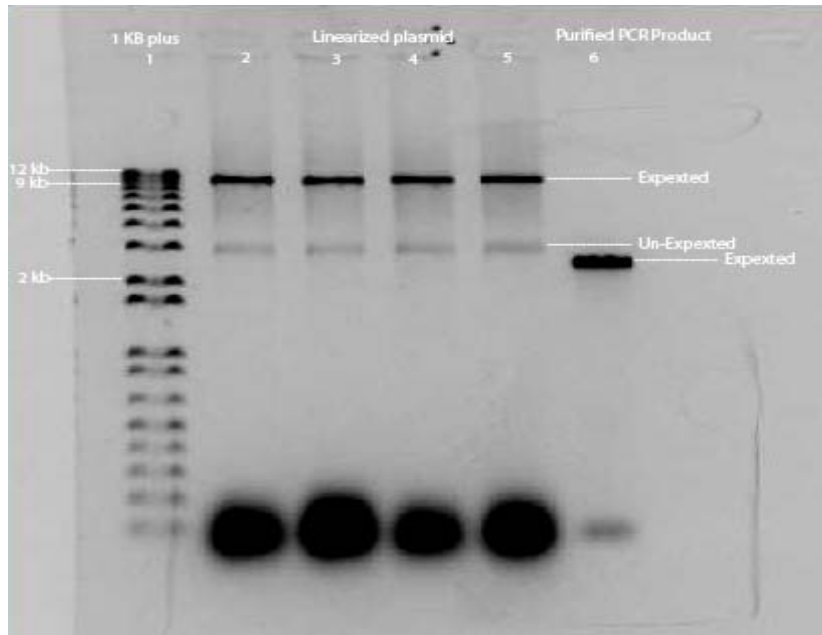
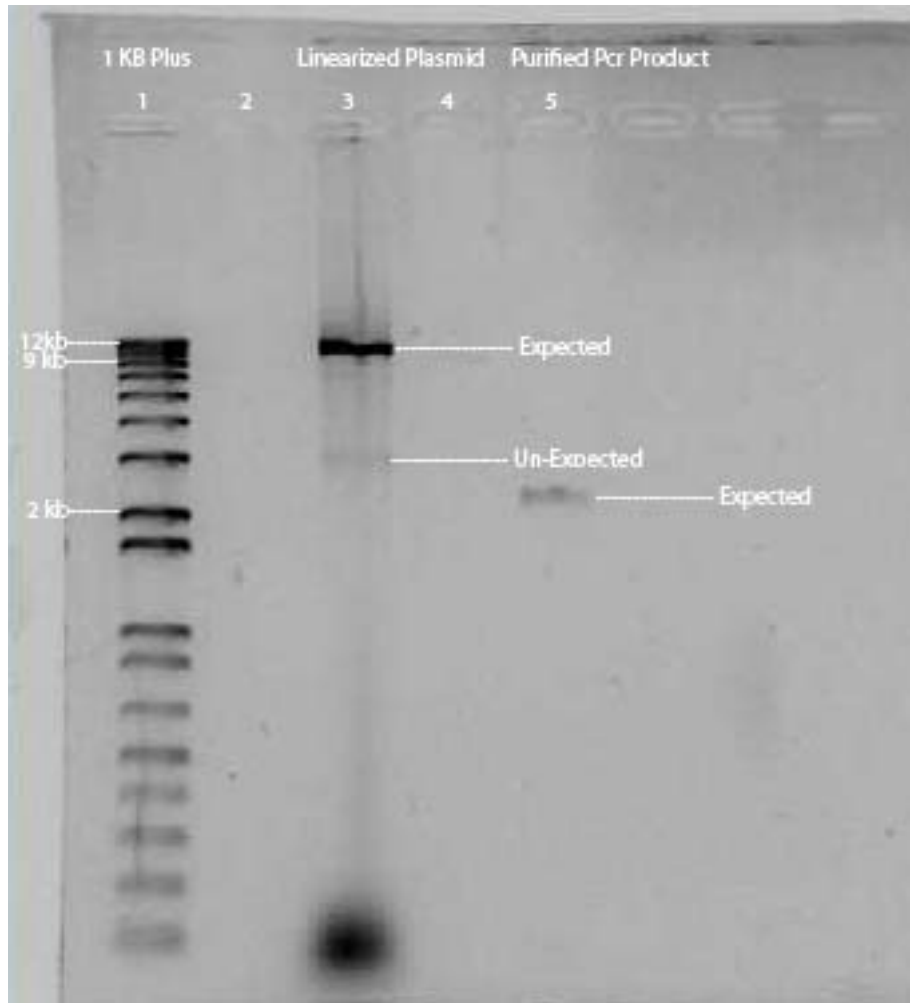


Figure 7: Purified RBC operon and linearized pDF-Trc plasmid. The gel was loaded with ladder in 1<sup>st</sup> well and linearized plasmid in 2<sup>nd</sup>, 3<sup>rd</sup>, 4<sup>th</sup> and 5<sup>th</sup> well. The PCR product was loaded in the 6<sup>th</sup> well.

### 3.1.8. Gel purified RBC operon and linearized vector

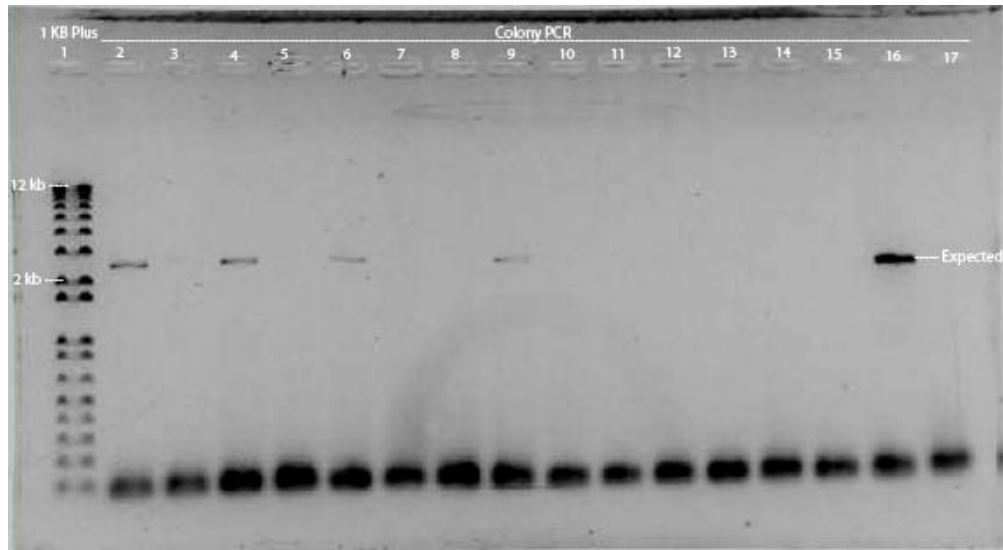
Figure 8 shows linearized pDF-Trc plasmid and gel purified RBC operon, separated on gel electrophoresis. Two digestion reactions were set to linearize pDF-Trc plasmid with *EcoR1* and *Pst1*. One of the digestion reactions was heated to inactivate digestion enzyme and the 2<sup>nd</sup> reaction was purified using purification kit. The result shows a clear expected length fragment that corresponds to the 9 kb mark on the ladder, with the digestion reaction that was heated. While, there is a very light and unclear band with the purified digestion reaction. The result also shows the expected length fragment in case of Gel purified RBC operon. Later on, this gel purified operon and the expected linearized vector with heated digestion reaction were used in ligation reaction and to transform *E. coli*.



*Figure 8:* Linearized plasmid and gel purified RBC operon. The gel was loaded with ladder in 1<sup>st</sup> well, heat inactivated digested plasmid in 3<sup>rd</sup> well, purified digested plasmid in 4<sup>th</sup> well and gel purified RBC operon in 5<sup>th</sup> well. The fragment obtained with the heated digested plasmid in 3<sup>rd</sup> well, that corresponds to the 9 kb mark on the ladder is the expected length fragment, also the length of the fragment with the gel purified operon, that corresponds to slightly above the 2 kb mark is the expected result.

### 3.1.9. Colony PCR

There were sixteen colonies on the plate (transformed cells), all the colonies were transferred to a tube and 10  $\mu$ l of water was added and the tube was heated for 1 minute, this inoculant was used as template in colony PCR. Products of colony PCR were separated on electrophoresis gel (*Figure 9*). The result shows that the amplified product is RBC operon. The length of the fragments is approximately 2400 kb, which is the size of RBC operon (2427 kb) and hence it indicates successful cloning.



*Figure 9:* The figure above shows the PCR products of a colony PCR. The gel was loaded with 1 kb plus ladder in the first well and the PCR products of colony PCR with each of the sixteen colonies in the following sixteen wells, the size of the fragment indicating that it is RBC operon.

### 3.2. Results (Bacteria as an interacting organism)

#### 3.2.1. Effect of ethanol on growth of *L.vini*

The effect of ethanol on the growth of *L. vini* was assessed in a batch culture using YPD medium with different ethanol concentrations. Three different ethanol concentration were used i.e. 10 g/l, 50 g/l and 100 g/l with initial pH adjusted to 5.

An ethanol concentration of 10 g/l had no considerable effect on the growth of *L. vini* (*Figure 10*). The cell numbers were increasing as soon as the culture was inoculated with an initial cell number of  $3 \times 10^7$  to over  $7 \times 10^7$  at the end of the experiment. The glucose consumption and lactate production also indicate that *L. vini* is present in the culture, consuming glucose while producing lactate.

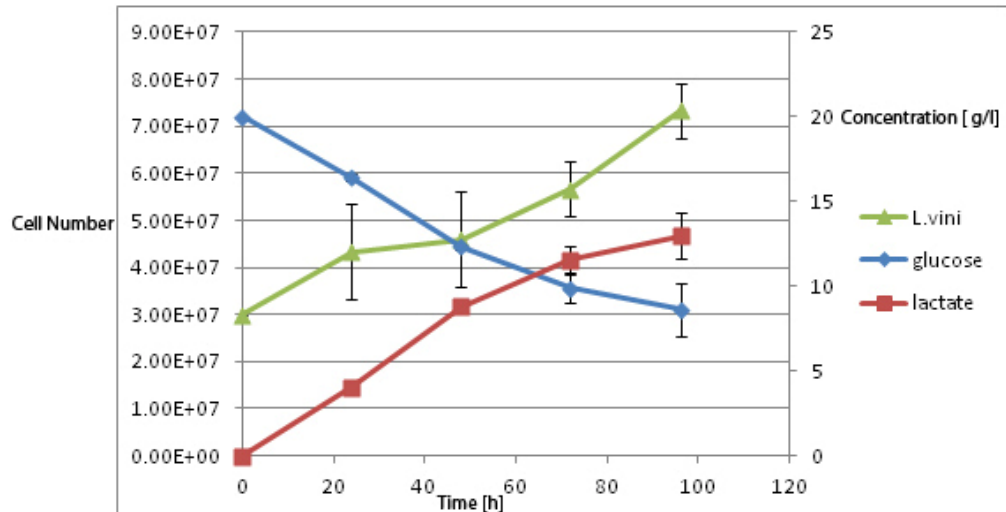


Figure 10: Effect of 10 g/l ethanol on growth of *L. vini*. Viable cell numbers are shown as triangles at different time points. The diamonds and rectangles shows glucose consumption and lactate production respectively in gram per litre [g/l] and the time is shown in hours [h].

An ethanol concentration of 50 g/l as compared to ethanol concentration of 10 g/l had a slightly negative effect on the growth of *L. vini* (Figure 11). The cell were increasing in numbers with the time as soon as the culture was inoculated with *L. vini* with the initial cell number  $3 \times 10^7$  to above  $7 \times 10^7$  at the end of experiment, which was the same as in case with 10 g/l concentration, but glucose consumption and lactate production were relatively low as compared to 10 g/l ethanol.

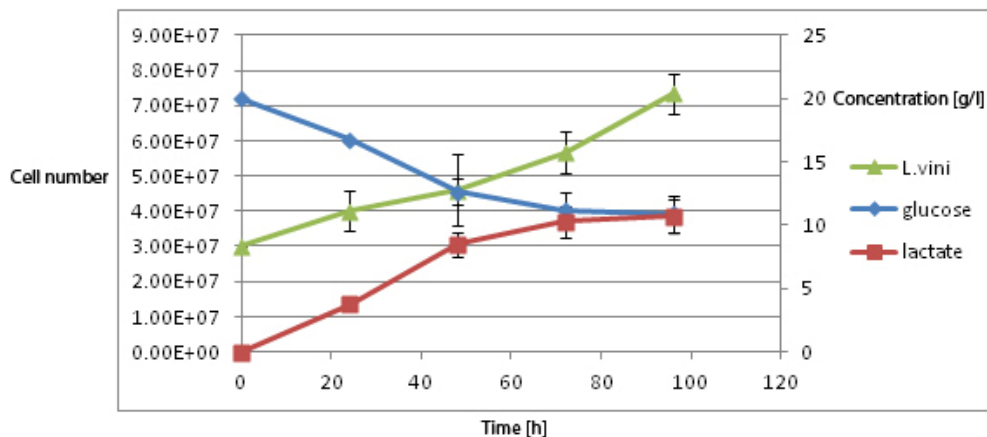


Figure 11: Effect of 50 g/L ethanol on growth of *L. vini*. Viable cell numbers are shown as triangles at different time points. The diamonds show the glucose consumption while the rectangles indicate lactate production in gram per litre [g/l]. The time is shown in hours [h].

An ethanol concentration of 100 g/l had a considerable effect on the growth of *L. vini*, as compared to 10 g/l and 50 g/l ethanol concentrations (Figure 12). Viable cell numbers were continuously decreasing at different time points and finally decreased below detection level at 100 h. This was accompanied by decreased glucose consumption and lactate production.

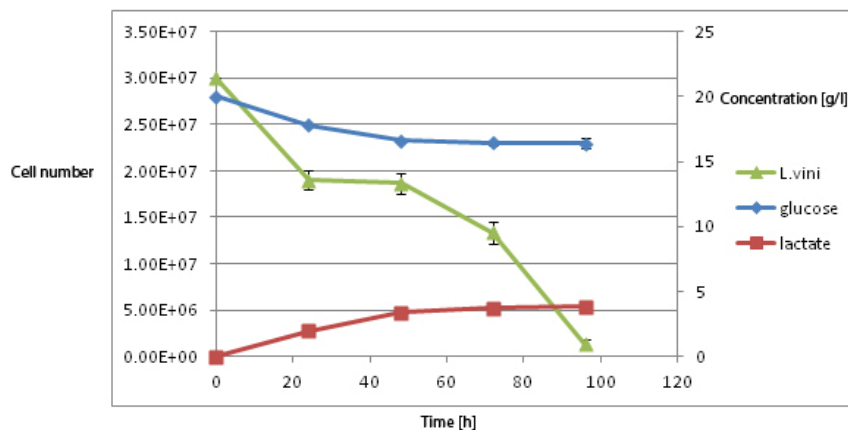


Figure 12: Effect of 100 g/L ethanol on growth of *L. vini* in a batch culture. Viable cell numbers are shown as triangles; glucose consumption and lactate production are shown as diamonds and rectangles respectively in gram per litre [g/l]. Time is shown in hours [h].

### 3.2.2. Co-culture of *L. vini* with *S. cerevisiae* and *D. bruxellensis*

*L. vini* was co-cultured with *S. cerevisiae* and *D. bruxellensis* separately and with both in another experiment, to assess the effects of these microorganisms on each other's growth since they actively compete for the energy source and produce different metabolites.

#### 3.2.2.1. Co-culture of *L. vini* with *S. cerevisiae*

The result (Figure 13) shows that both the microorganisms had continuous growth in number as long as glucose was available but entered a stationary phase as soon as glucose was depleted, which was accompanied by a halt in ethanol production and lactate production. The cell numbers of *L. vini* and *S. cerevisiae* finally reached  $7 \times 10^7$  and  $4.5 \times 10^7$  respectively, before stationary phase. Ethanol concentration reached to a concentration of 6 g/l before a halt in its production. There was a slight increase in lactate production in the beginning but then it started to decrease below the detection level. There were also some other certain metabolites such as, glycerol and acetate in a concentration below detection level.

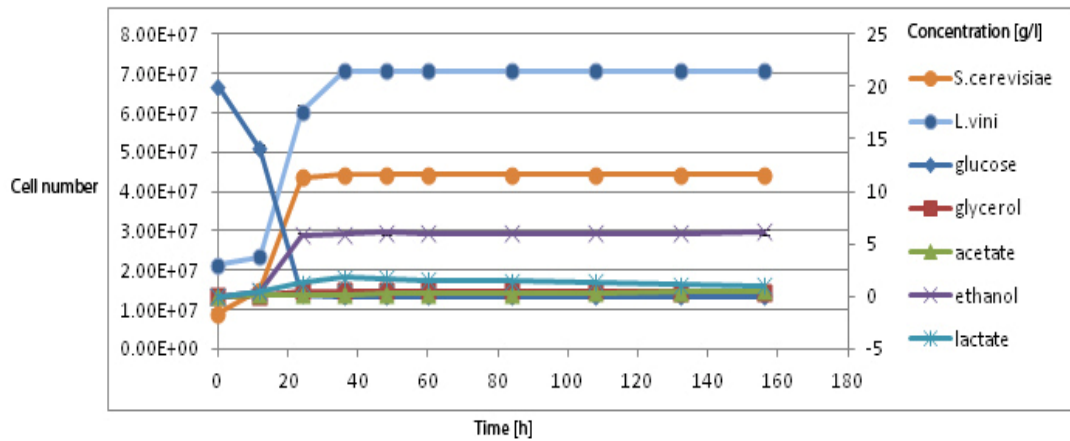


Figure 13: Co-culture of *L. vini* and *S. cerevisiae* producing various metabolites. Viable cell numbers of *L. vini* and *S. cerevisiae* are shown as dots at the top and second from the top respectively. Ethanol concentration and lactate concentration in gram per litre are shown as crosses and double crosses respectively. The experiment time is shown in hours [h].

### 3.2.2.2. Co-culture of *L. vini* with *D. bruxellensis*

The result (Figure 14) shows that both the microorganisms were continuously growing in number as long as glucose was available for consumption, but both the organisms stopped growing in number and entered a stationary phase as soon as glucose was depleted. This was also accompanied by a halt in metabolites production including lactate and ethanol. The cell numbers of *L. vini* and *D. bruxellensis* reached to a final of  $7 \times 10^7$  and  $5 \times 10^7$  respectively, before stationary phase. Ethanol concentration reached to a concentration of 5 g/l before a halt in its production. There was a slight increase in lactate production in the beginning but then its production stopped and there was no gain or lost in lactate concentration and a final concentration of approximately 2.5 g/l was reached. There were also some other certain metabolites glycerol and acetate in a concentration below detection level.

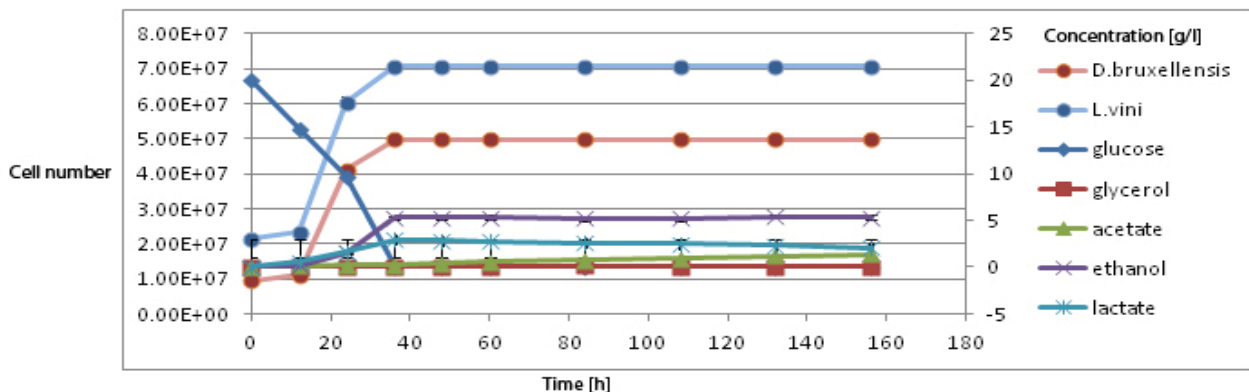


Figure 14: Co-culture of *L. vini* and *D. bruxellensis*. Viable cell numbers of *L. vini* and *D. bruxellensis* are shown as dots at the top and second from the top respectively. Ethanol concentration and lactate concentration in gram per litre are shown as crosses and double crosses respectively. The experiment time is shown in hours [h].

### 3.2.2.3. Co-culture of *L.vini* with *S.cerevisiae* and *D.bruxellensis*

The result (Figure 15) shows that *L. vini* grew relatively slow in this case as compared to when it was co-cultured with *D. bruxellensis* and *S. cerevisiae* separately, as indicated by viability count, which is approximately  $5.4 \times 10^7$  in this case compared to  $7 \times 10^7$  in earlier cases. *S. cerevisiae* and *D. bruxellensis* were also growing as long as glucose was present and entered stationary phase when glucose was depleted. The cell numbers of both yeast species i.e. *S. cerevisiae* and *D. bruxellensis* reached to final  $3.5 \times 10^7$  and  $2.8 \times 10^7$  respectively. Ethanol was produced to a final concentration of 5 g/l and lactate was produced to approximately 2 g/l final concentration.

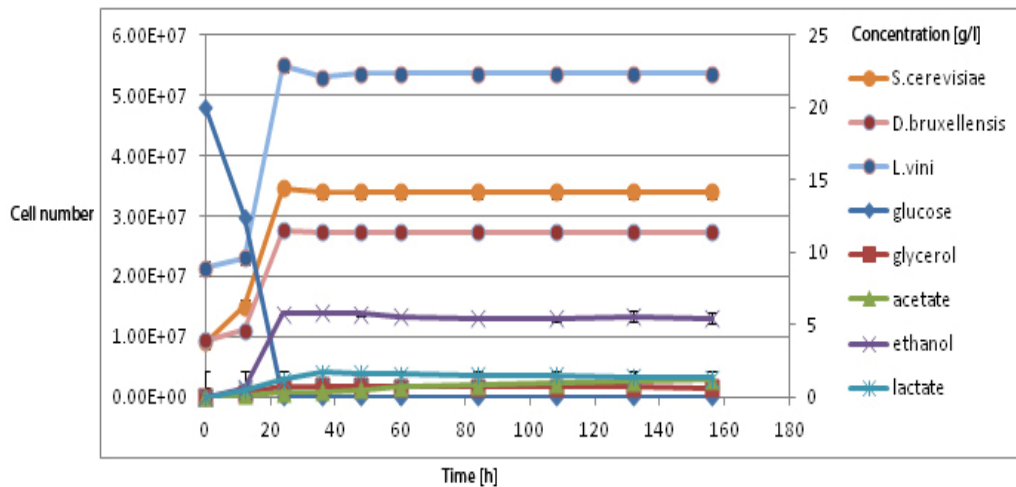


Figure 15: Co-culture of *L. vini* with *D. bruxellensis* and *S. cerevisiae*. Viable cell numbers of *L. vini*, *S. cerevisiae* and *D. bruxellensis* are shown as dots at the top, second from the top and third from the top respectively. Ethanol concentration and lactate concentration in gram per litre [g/l] are shown as crosses and double crosses respectively. The experiment time is shown in hours [h].

## 4. Discussion

### 4.1. Bacteria as production organism

The aim of this project was to optimize Rubisco activity by introducing additional gene cassettes of Rubisco in Cyanobacteria. We intended to increase the capacity of Cyanobacteria to fix  $\text{CO}_2$  and to increase the yield of the final product i.e. carbohydrate.

First, we tried to transform *E. coli* with pDF-Trc vector construct using in-fusion cloning method but we did not succeed in that. Then we used conventional cloning method i.e. ligation and transformation of *E. coli* with ligation reaction and we were able to successfully transform *E. coli* with RBC operon as shown in figure 9.

The possible reasons behind the failure of in-fusion cloning to work might be the concentration of plasmid used (50 ng/ $\mu\text{l}$ ), which was less than the recommended concentration i.e. 100 ng/ $\mu\text{l}$ . pDF-Trc is a low copy number plasmid and that might also contribute/lead to failure since In-fusion cloning is



not that efficient with low copy number plasmids. A possible explanation for the fact that we got colonies on antibiotic plates but the cells did not grow in liquid culture might be that while making plates the antibiotic was not completely mixed in the plates and the cells formed colonies on the plates with minimal or no antibiotic concentration and when the cells were cultured in liquid medium with evenly mixed antibiotic, they did not grow due to high sensitivity to the antibiotic.

A successful cloning with conventional method as indicated by colony PCR suggests that conventional cloning is the method of choice for cloning low copy plasmids, also heat inactivation after restriction digestion seems to avoid further degradation of plasmid and had a positive impact on the cloning reaction.

#### **4.1.1. Work need to be done**

Further work that needs to be done is transformation of *Synechocystis* PCC 6803 with the construct and to evaluate the expression of Rubisco and carbon fixation capacities through Rubisco activity assay and biomass characterization.

## **4.2. Bacteria as an interacting organism**

### **4.2.1. Effect of ethanol on *L. vini* growth**

We used different concentrations of ethanol to assess its effects on the growth of *L. vini*; we conclude that lower concentrations i.e. 10 g/l and 50 g/l have no considerable effect on the growth of *L. vini* since it was continuously growing in cell numbers, the glucose consumption and lactate production also suggested that *L. vini* was still growing. However at higher concentration of ethanol 100 g/L, there was a continuous decrease in *L. vini* cell number close to detection limit. The study shows that *L. vini* can tolerate and survive high ethanol concentration as compared to other microorganisms. It has been shown that *Lactobacillus sp.* can tolerate and grow at as much as 16 % ethanol concentration (43). It has also been shown that *Lactobacillus* species are capable of growing at 150 g/l to 200 g/l ethanol concentration and can survive at 250 g/l (44). The exact mechanism behind it is unknown but it might be due to ethanol-induced changes in fatty acid composition of plasma membrane lipids, producing a more 'fluid' membrane. This fluidization can be explained as a counterbalance to the physico-chemical effect of ethanol on plasma membrane (45).

### **4.2.2. Co-culture of *L. vini* with *S. cerevisiae* and *D. bruxellensis***

The results for co-culture show that, *L. vini* has better growth when it is co-cultured separately with *S. cerevisiae* and *D. bruxellensis* as compare to, when it was co-cultured with both the yeasts. The microorganisms show an increase in cell number until glucose was present in the batch culture and entered a stationary phase when glucose was depleted, which negatively prove the hypothesis that these microorganisms might interact in such a way that they produce some secondary metabolites and promote the growth of one another. However, if we compare the production of ethanol, we conclude that, it is relatively similar in cases where *L. vini* is co-cultured with *D. bruxellensis* and

with both the yeasts, but it is relatively higher in the case, where *L. vini* was cultured with *S. cerevisiae*, suggesting that, *S. cerevisiae* is a fast growing yeast consuming glucose more fast and make it less available for *L. vini*. The growth curves of both yeast species also show that, the growth of *S. cerevisiae* was not affected when it was co-cultured with *L. vini* alone or together with *D. bruxellensis*, however the growth of *D. bruxellensis* was relatively lower when it was co-cultured with other two microorganisms than the one where it was cultured with *L. vini*, that might be because of, that *D. bruxellensis* is slow growing compared to *S. cerevisiae* and that *S. cerevisiae* consumed glucose faster as compared to *D. bruxellensis*, making it less available for *D. bruxellensis* to grow fast in cell numbers.

## 5. Acknowledgements

I am thankful, from all my heart to my examiner and supervisors, Volkmar Passoth (SLU), Yumiko Sakuragi (KU) and Ievgenia Tiukova, whose encouragement, supervision and support from the preliminary to the concluding level enabled me to develop an understanding of the project.

Lastly, I offer my regards to Lisa Rosgaard, Christian, Catherine, Anne, Maria, Casper, Majse, Rizwan, Tariq, Ishaq and Khaled who supported me in any respect during the completion of the project.

Last but not least, I would like to thank my loving parents for their unconditional love and continuous support throughout my life.

## 6. References

1. Patrik, R. Direct biological conversion of solar energy to volatile hydrocarbon fuels by engineered cyanobacteria, direct fuel, <http://www.directfuel.eu/DFrenewFuel3.html> (access on 5<sup>th</sup> October 2011).
2. Energy future coalition, energy future coalition, <http://www.energyfuturecoalition.org/biofuels/index.html> (access on 13<sup>th</sup> October 2011).
3. Kumar, A., Ergas, S., Yuan, X., Sahu, A., Zhang, Q., Dewulf, J., Malcata, F. X., and van Langenhove, H. (2010). Enhanced CO<sub>2</sub> fixation and biofuel production via microalgae: recent developments and future directions. *Trends Biotechnol.* **28**, 371-380.
4. Brennan, L, Owende, P. (2010). Biofuels from microalgae—A review of technologies for production, processing, and extractions of biofuels and co-products, s. *Renew Sustain Energy Rev.* **14**, 557-577.
5. Moore, A. (2008) Biofuels are dead: long live biofuels(?) - part one. *New Biotechnol.* **25**(1): 6-12.
6. FAO. (2008). The state of food and agriculture 2008. New York: Food and Agriculture Organization.
7. Wang, B., Li, Y., Wu, N., and Lan, C. Q. (2008). CO<sub>2</sub> bio-mitigation using microalgae. *Applied Microbiology Biotechnology.* **79**(5), 707-18.
8. Schenk, P., Thomas-Hall, S., Stephens, E., Marx, U., Mussgnug, J., Posten, C et al. (2008). Second generation biofuels: high-efficiency microalgae for biodiesel production. *BioEnergy Research.*, **1**(1):20–43.
9. Dismukes, G. C., Carrieri, D., Bennette, N., Ananyev, G. M., and Posewitz, M. C. (2008) Aquatic phototrophs: efficient alternatives to land-based crops for biofuels. *Current Opinion in Biotechnology.* **19**, 235-240.

10. Searchinger, T., Heimlich, R., Houghton, R. A., Dong, F., Elobeid, A., Fabiosa, J., Tokgoz, S., Hayes, D., and Yu, T. H. (2008) Use of U.S. croplands for biofuels increases greenhouse gases through emissions from land-use change. *Science*. **319**, 1238-1240.
11. Chisti, Y. (2007). Biodiesel from microalgae. *Biotechnol Advances*. **25(3)**, 294-306.
12. Ono, E., Cuello, J.L. (2006). Feasibility assessment of microalgal carbon dioxide sequestration technology with photobioreactor and solar collector. *Biosystems, Engineering*. **95(4)**:597–606.
13. Pulz, O., Scheinbenbogan K. (1998). Photobioreactors: design and performance with respect to light energy input. *Advances in Biochemical Engineering/Biotechnology*. 59:123– 52.
14. Ugwu, C. U., Aoyagi, H., and Uchiyama, H. (2008). Photobioreactors for mass cultivation of algae. *Bioresource Technology*. **99(10)**, 4021-4028.
15. Fay, P. (1992). Oxygen relations of nitrogen fixation in cyanobacteria. *Microbiological Review*. **56(2)**, 340-373.
16. Kebeish, R., Niessen, M., Thiruveedhi, K., Bari, R., Hirsch, H. J., Rosenkranz, R., Stabler, N., Schonfeld, B., Kreuzaler, F., and Peterhansel, C. (2007). Chloroplastic photorespiratory bypass increases photosynthesis and biomass production in *Arabidopsis thaliana*. *Nature Biotechnology*. **25(5)**, 593-599.
17. Ellis, R. J. (2010). Biochemistry: Tackling unintelligent design. *Nature* . **463(14)**, 164-165.
18. Liu, C., Young, A. L., Starling-Windhof, A., Bracher, A., Saschenbrecker, S., Rao, B. V., Rao, K. V., Berninghausen, O., Mielke, T., Hartl, F. U., Beckmann, R., and Hayer-Hartl, M. (2010). Coupled chaperone action in folding and assembly of hexadameric Rubisco. *Nature*. **463(14)**, 197-202.
19. Atsumi, S., Higashide, W., and Liao, J. C. (2009). Direct photosynthetic recycling of carbon dioxide to isobutyraldehyde. *Nature Biotechnology*. **27(12)**, 1177-1180.
20. Hansen, A. C., Zhang, Q., and Lyne, P. W. (2005). Ethanol-diesel fuel blends -- a review. *Bioresource Technology*. **96**, 277-285.
21. Myers, R.L., (2007). The 100 most important chemical compounds. Greenwood Publishing group, USA.
22. Fortman, J. L., Chhabra, S., Mukhopadhyay, A., Chou, H., Lee, T. S., Steen, E., and Keasling, J. D. (2008). Biofuel alternatives to ethanol: pumping the microbial well. *Trends in Biotechnology*. **26(7)**, 375-381.
23. Lin, Y., and Tanaka, S. (2006). Ethanol fermentation from biomass resources: current state and prospects. *Applied Microbiology Biotechnology* .**69**, 627-642.
24. Piskur, J., Rozpedowska, E., Polakova, S., Merico, A., and Compagno, C. (2006) How did *Saccharomyces* evolve to become a good brewer? *Trends Genet*. **22**, 183-186.
25. Thomson, J. M., Gaucher, E. A., Burgan, M. F., De Kee, D. W., Li, T., Aris, J. P., and Benner, S. A. (2005). Resurrecting ancestral alcohol dehydrogenases from yeast. *Nature Genetics*. **37**, 630-635.
26. Prochazka, E., Polakova, S., Piskur, J., and Sulo, P. (2010). Mitochondrial genome from the facultative anaerobe and petite-positive yeast *Dekkera bruxellensis* contains the NADH dehydrogenase subunit genes. *FEMS Yeast Res*. **10(5)**, 545-557.
27. Hellborg, L., and Piskur, J. (2009). Complex nature of the genome in a wine spoilage yeast, *Dekkera bruxellensis*. *Eukaryotic Cell* **8(11)**, 1739-1749.
28. Passoth, V., Blomqvist, J., and Schnurer, J. (2007). *Dekkera bruxellensis* and *Lactobacillus vini* form a stable ethanol-producing consortium in a commercial alcohol production process. *Applied Environment Microbiology*. **73**, 4354-4356.
29. Dato, M. C. F., J. M. Pizauro, and M. J. R. Mutton. (2005). Analysis of the secondary compounds produced by *Saccharomyces cerevisiae* and wild yeast strains during the production of “cachaca.” *Brazilian Journal of Microbiology*. **36**:70–74.
30. Blomqvist, J., Eberhard, T., Schnurer, J., and Passoth, V. (2010). Fermentation characteristics of *Dekkera bruxellensis* strains. *Applied Microbial and Cell Biology*. **87**, 1487-1497.
31. Gottshalk, G. (1986). Bacterial Metabolism. New york: Springer-Verlag, Edition **2**. 214-224.
32. Ljungh, Å., Wadström, T., (2009). Lactobacillus molecular biology: from genomics to probiotics, Caister Academic Press. Norfolk, UK. (p.14-18).
33. Kandler O., and Weiss N., Genus Lactobacillus,. In, P. H. A. Sneath, N. S. Mair, M. E. Sharpe, and J. G. Holt (eds.), (1986) Bergey's Manual of Systematic Bacteriology, vol. **2**, 9<sup>th</sup> edition. Williams and Wilkins, USA. (p. 1063-1065).

34. Oliva-Neto P.; Yokoya F.( 2001) Susceptibility of *Saccharomyces cerevisiae* and lactic acid bacteria from alcohol industry to several antimicrobial compounds; *Brazilian Journal of Microbiology*. Vol.32 (1).
35. Rodas AM, Chenoll E, Macian MC, Ferrer S, Pardo I, Aznar R. (2006) *Lactobacillus vini* sp. nov., a wine lactic acid bacterium homofermentative for pentoses. *Int J Syst Evol Microbiol* , **56**:513-517.
36. Lucena BTL, dos Santos BM, Moreira JLS, Moreira APB, Nunes AC, Azevedo V, Miyoshi A, Thompson FL, Morais MA.(2010). Diversity of lactic acid bacteria of the bioethanol process. *BMC Microbiology* 10:298.
37. Zaldivar, J., Nielsen, J., and Olsson, L. (2001) Fuel ethanol production from lignocellulose: a challenge for metabolic engineering and process integration. *Applied Microbiology Biotechnology*. **56**, 17-34.
38. S.V. Ramakrishna, T. S. Ratnakumari and P. S. T. Sai, (1991) Optimization of process parameters for the continuous production of alcohol with a cell immobilized bioreactor, *Bioprocess Engineering*. **6**. 141-144.
39. Torija, M.J, Beltran, G., Novo, M., Poblet, M., Guillamon, J.M., Mas, A., Rozes, N., (2002) Effects of fermentation temperature and *Saccharomyces* species on the cell fatty acid composition and presence of volatile compounds in wine, *International Journal of Food Microbiology*. **85**. 127– 136.
40. Fleet, G. H. (2003) Yeast interactions and wine flavour. *International Journal of Food Microbiology*. **86**, 11-22.
41. Transformation Protocol described in the Invitrogen manual provided with kit.
42. <http://www.invitrogen.com/site/us/en/home/References/protocols/cloning/ligation-protocol/cloning-of-a-tailed-pcr-fragments-using-conventional-ligase-method.html>
43. Gold, R.S, Meagher, M.M, Hutkins, R., Conway, T., (1992). Ethanol tolerance and carbohydrate metabolism in lactobacilli, *Journal of Industrial Microbiology*, **10**. 45-54.
44. Jones, R.P, (1989) Biological principles for the effects of ethanol; *Enzyme Microb. Technol.*, vol. **11(March)**, 130-153.
45. Couto, J.A., Rozes, N., Hogg, T. (1996) Ethanol-induced changes in the fatty acid composition of *Lactobacillus hilgardii*, its effects on plasma membrane fluidity and relationship with ethanol tolerance, *Journal of Applied Bacteriology*, **81**. 126-132.